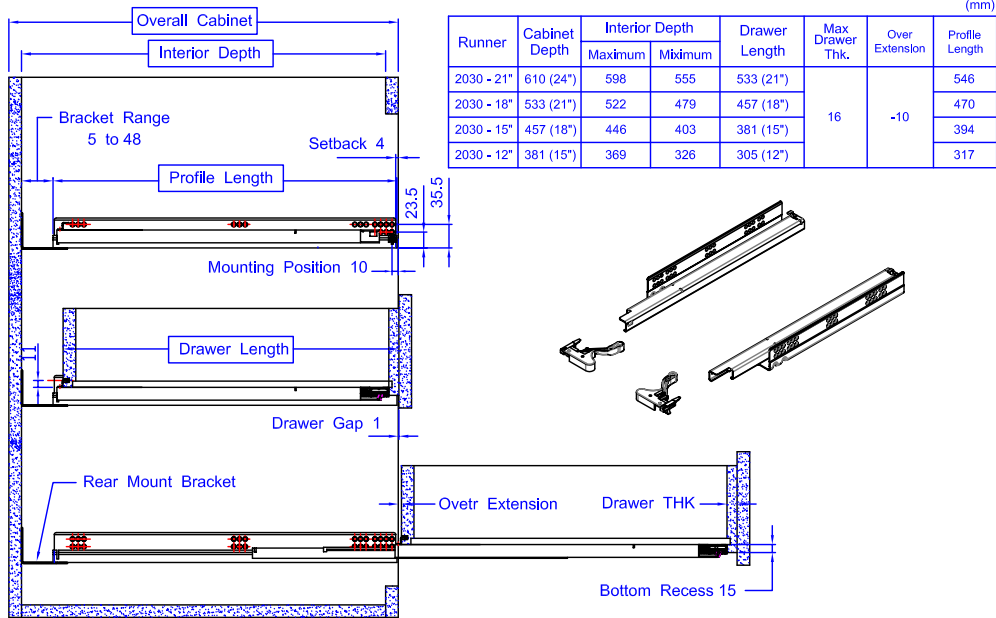


2030 G-SLIDE INSTALLATION

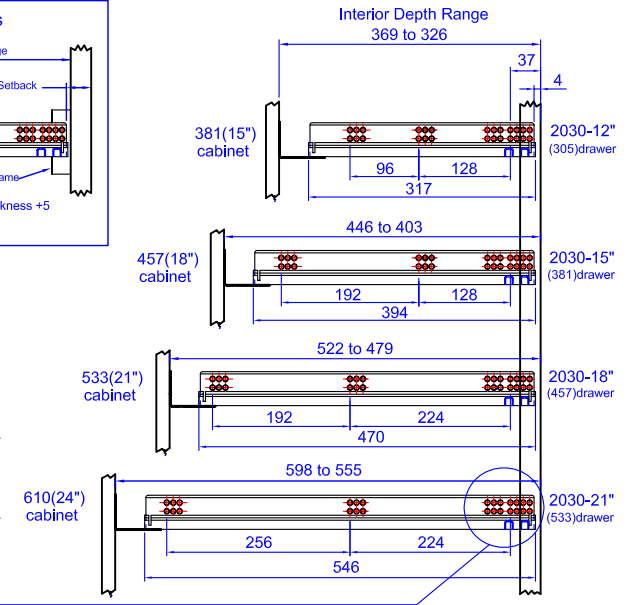
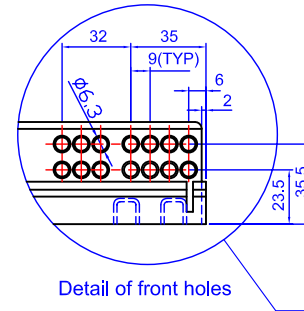
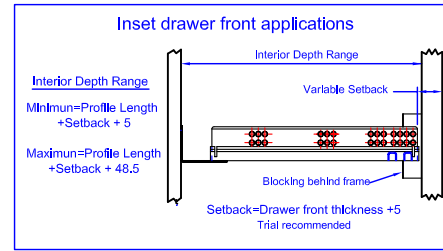


2030 Soft - closing function
2031 Self - closing function

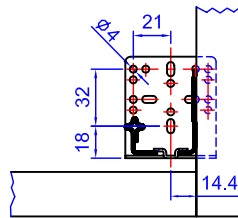
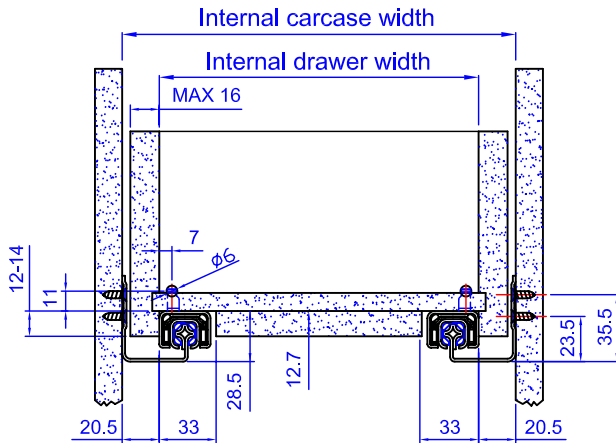
Concealed Slide



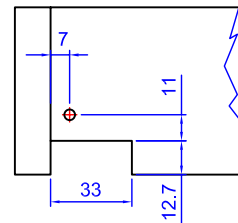
Installation dimensions (mm)



internal drawer width = internal carcass width - 41mm



Rear Mount Bracket



Rear view of drawer notch and bore details

How to calculate outside drawer width		
If drawer side thickness is	16 (5/8")	13 (1/2")
Deduct from internal carcass width	10 (3/8")	16 (5/8")

Example: For 21" internal carcass width and a 5/8" drawer material: 21" minus 3/8" = 20-5/8" drawer width

Drawer removal and installation

